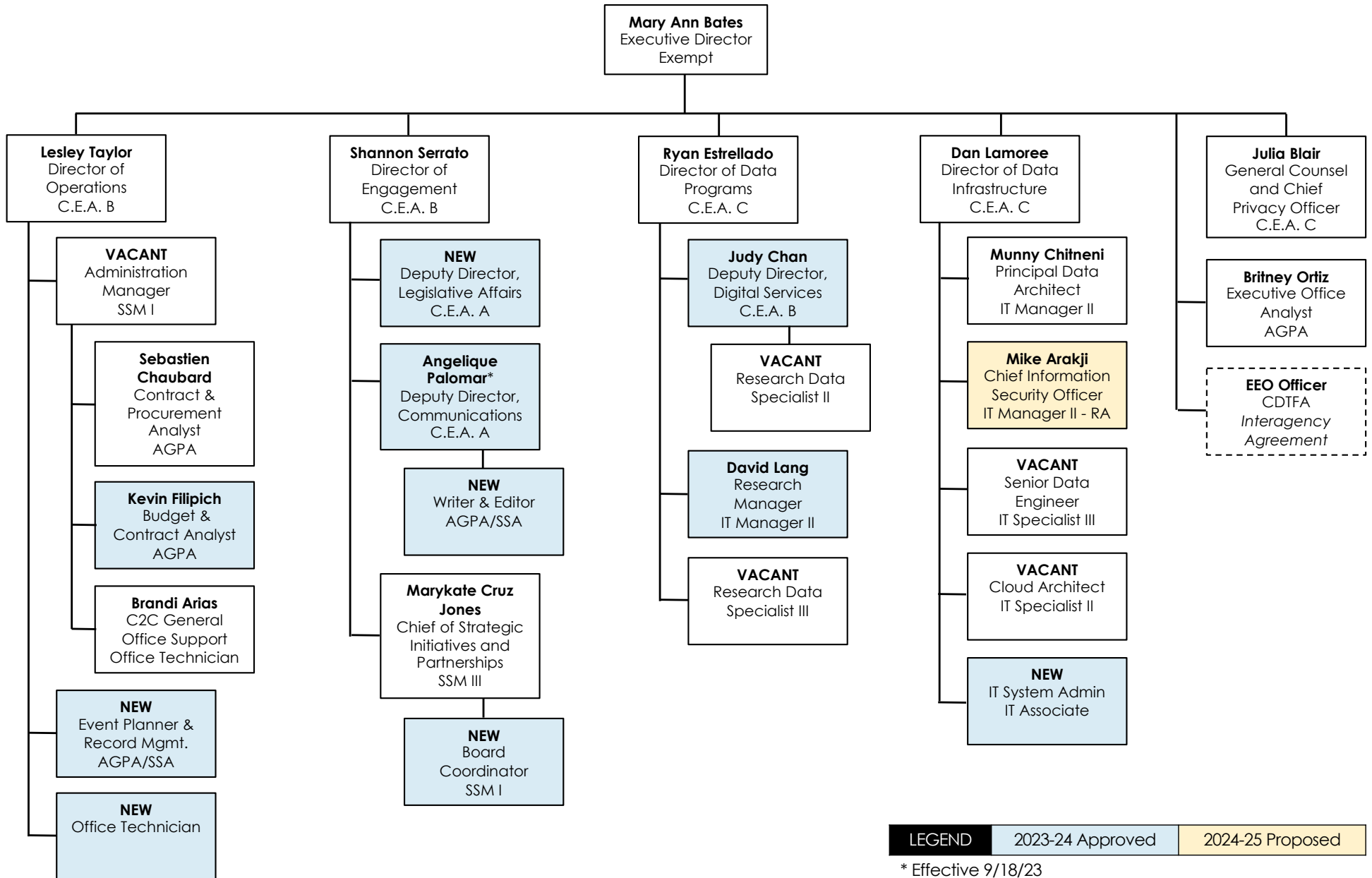


Organizational Chart for the Office of Cradle-to-Career Data

Established and Proposed Positions (eff. 8/3/23)



LEGEND	2023-24 Approved	2024-25 Proposed
--------	------------------	------------------

* Effective 9/18/23

Organizational Chart for the Office of Cradle-to-Career Data
 Established and Proposed Positions (eff. 8/3/23) – Accessible Version

Name	Title	Classification	Reports to
Mary Ann Bates	Executive Director	Exempt	C2C Governing Board
Lesley Taylor	Director of Operations	C.E.A. B	Mary Ann Bates
VACANT	Administration Manager	SSM I	Lesley Taylor
Sebastien Chaubard	Contract & Procurement Analyst	AGPA	Administration Manager
Kevin Filipich	Budget & Contract Analyst	AGPA	Administration Manager
Brandi Arias	C2C General Office Support	Office Technician	Administration Manager
NEW	Event Planner & Record Mgmt.	AGPA/SSA	Lesley Taylor
NEW	Office Technician	Office Technician	Lesley Taylor
Shannon Serrato	Director of Engagement	C.E.A. B	Mary Ann Bates
NEW	Deputy Director, Legislative Affairs	C.E.A. A	Shannon Serrato
Angelique Palomar*	Deputy Director, Communications	C.E.A. A	Shannon Serrato
NEW	Writer & Editor	AGPA/SSA	Angelique Palomar
Marykate Cruz Jones	Chief of Strategic Initiatives & Partnerships	SSM III	Shannon Serrato
NEW	Board Coordinator	SSM I	Marykate Cruz Jones
Ryan Estrellado	Director of Data Programs	C.E.A. C	Mary Ann Bates
Judy Chan	Deputy Director, Digital Services	C.E.A. B	Ryan Estrellado
VACANT	Research Data Specialist II	RDS II	Judy Chan
David Lang	Research Manager	IT Manager II	Ryan Estrellado
VACANT	Research Data Specialist III	RDS III	Ryan Estrellado
Dan Lamoree	Director of Data Infrastructure	C.E.A. C	Mary Ann Bates
Munny Chitneni	Principal Data Architect	IT Manager II	Dan Lamoree
Mike Arakji	Chief Information Security Officer	IT Manager II – RA	Dan Lamoree
VACANT	Senior Data Engineer	IT Specialist III	Dan Lamoree
VACANT	Cloud Architect	IT Specialist II	Dan Lamoree
NEW	IT System Admin	IT Associate	Dan Lamoree
Julia Blair	General Counsel and Chief Privacy Officer	C.E.A. C	Mary Ann Bates
Britney Ortiz	Executive Office Analyst	AGPA	Mary Ann Bates
CDTFA	EEO Officer	Interagency Agreement	Mary Ann Bates

* Effective 9/18/23