

## **John Ohanian**

### **Director, Center for Data Insights and Innovation**



John Ohanian serves as Chief Data Officer for California Health and Human Services Agency and is the Director for its Center for Data Insights and Innovation (CDII). His current role is to transform services to be person-centered; accelerate the exchanging of health and human service data (within the Agency and beyond); and create a data ecosystem to drive insights for leadership, researchers, and other partners—to achieve a Healthy California for All. His teams focus on ways to collect better quality data, reduce racial and ethnic health disparities, innovate and incubate data processes to create efficiencies, and help ensure equitable distribution of resources to all communities. Previously, John spent 30 years in start-ups both private and in community-based organizations, leading and designing emerging organizational data systems, raising investment capital, and developing social enterprise strategies for sustainability.

## **Ryan Gillette**

### **Chief Data Officer and Deputy Director, Research, Automation, and Data Division**



Ryan Gillette is the Chief Data Officer and Deputy Director over the Research, Automation, and Data Division (RADD) at the California Department of Social Services (CDSS). His team has two main objectives: ensuring the accurate, timely, and efficient collection and management of CDSS enterprise data assets, and deploying that data through research, analysis, and visualizations to support policymaking. Prior to joining CDSS, Ryan was a Director with Social Finance, where he led the Public Sector Practice focusing on issues related to early childhood, homelessness, and economic mobility. Before that,

he was a Program Director of the Harvard Kennedy School of Government Performance Lab, where he pioneered the use of Social Impact Bonds—a contracting tool designed to increase the use of data and evidence-based practices in policymaking.

**Jim Switzgable**  
**Chief Information Officer**



Jim Switzgable is the Chief Information Officer for the Department of Developmental Services. He has worked for 30 years in executive roles within the technology, managed health care and insurance industries. In 2014, Jim moved from private industry to California state government accepting the role of Chief Information Officer at the Emergency Medical Services Authority. Jim moved to the Department of Developmental Services where he was the Branch Chief of Data and Development, later creating and heading up the new branch of Portfolio and Project Management, and in January 2021 becoming CIO.

**Maricris Acon**  
**Deputy Director for Children, Adolescents and Young Adult Services Division**



Maricris Acon is the Deputy Director for Children, Adolescents and Young Adult Services Division at the California Department of Developmental Services (DDS). The Division provides leadership and support to California's early intervention community, regional center staff, providers, and contractors serving children and youth with intellectual/developmental delays and disabilities ages birth through 22. As the Deputy Director, Maricris oversees initiatives and investments for improving access and delivery of services in the Early Start program, and for helping

children and youth plan a life consisting of a strong sense of belonging in the community, independence and self-direction, and employment.

# Integrating Health and Human Services With Cradle-to-Career



# Thank you for having us to discuss:

- |  |                               |
|--|-------------------------------|
| I. Overview of CalHHS, CDII, and the Data Hub    | John Ohanian                  |
| II. Integrating Social Services With CDSS        | Ryan Gillette                 |
| III. Integrating Developmental Services With DDS | Maricris Acon, Jim Switzgable |
| IV. CalHHS → Cradle-to-Career                    | John Ohanian                  |
| V. Questions                                     |                               |



# Our presenters



**John Ohanian, CDII**

Chief Data Officer with mission on the State's ability to become more data driven and person centered to improve the health of all Californians



**Ryan Gillette, CDSS**

Chief Data Officer and Deputy Director over the Research, Automation, and Data Division



**Maricris Acon, DDS**

Deputy Director for the Children, Adolescents, Young Adults Services Division



**Jim Switzgable, DDS**

Deputy Director and Chief Information Officer





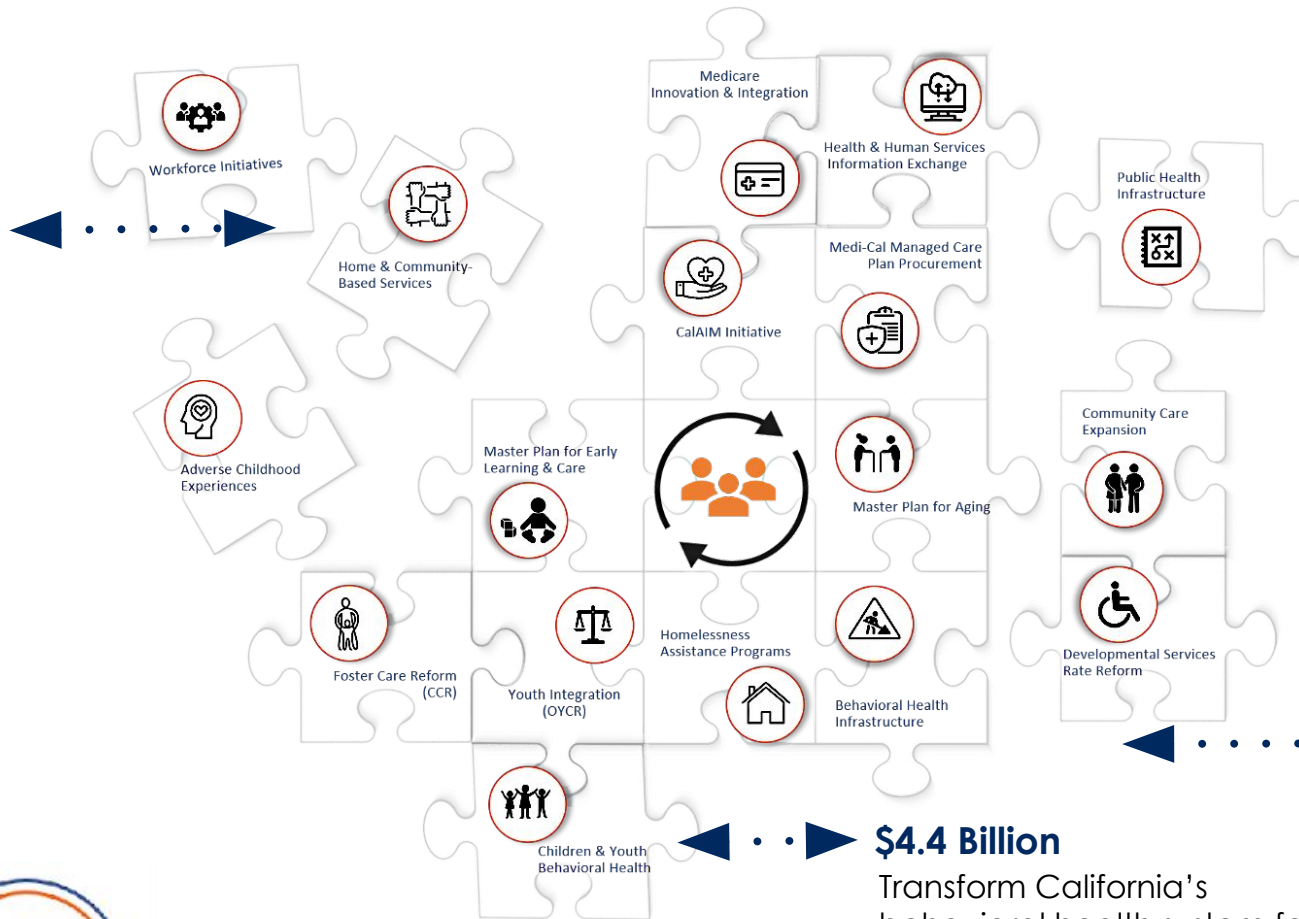
# Overview of CalHHS, CDII, and the Data Hub



# CalHHS Guiding Principles: Person Centered. Equity Focused. Data Driven.

## \$3 Billion

New investments across a range of state HCBS programs to build a modern, inclusive HCBS system that provides robust health and human services to California's most vulnerable residents, in their communities.



## \$2.2 Billion

Construct, acquire, and rehabilitate infrastructure to expand the community continuum of behavioral health treatment resources.

## \$4.4 Billion

Transform California's behavioral health system for children and youth into an innovative and prevention-focused system.







Represents 12 Agency Departments *and* the Center for Data Insights and Innovation

|             |                              |  |                                     |   |                                       |                             |                       |                      |                      |                               |                       |
|-------------|------------------------------|--|-------------------------------------|---|---------------------------------------|-----------------------------|-----------------------|----------------------|----------------------|-------------------------------|-----------------------|
| Aging (CDA) | Child Support Services (CSS) | Community Services & Development (CSD) | <b>Developmental Services (DDS)</b> | Emergency Medical Services Authority (EMSA) | Health Care Access Information (HCAI) | Health Care Services (DHCS) | Managed Health (DMHC) | Public Health (CDPH) | Rehabilitation (DOR) | <b>Social Services (CDSS)</b> | State Hospitals (DSH) |
|-------------|------------------------------|--|-------------------------------------|---|---------------------------------------|-----------------------------|-----------------------|----------------------|----------------------|-------------------------------|-----------------------|

**Center for Data Insights and Innovation (CDII)**



# CDII as Part of CalHHS



The Center for Data Insights and Innovation (CDII) provides an infrastructure for data sharing that helps Californians access, use, and understand data from CalHHS.

CDII works with California state agencies and external partners to develop products and services to improve data sharing and analysis.

**One way we do this is through the Agency Data Hub**

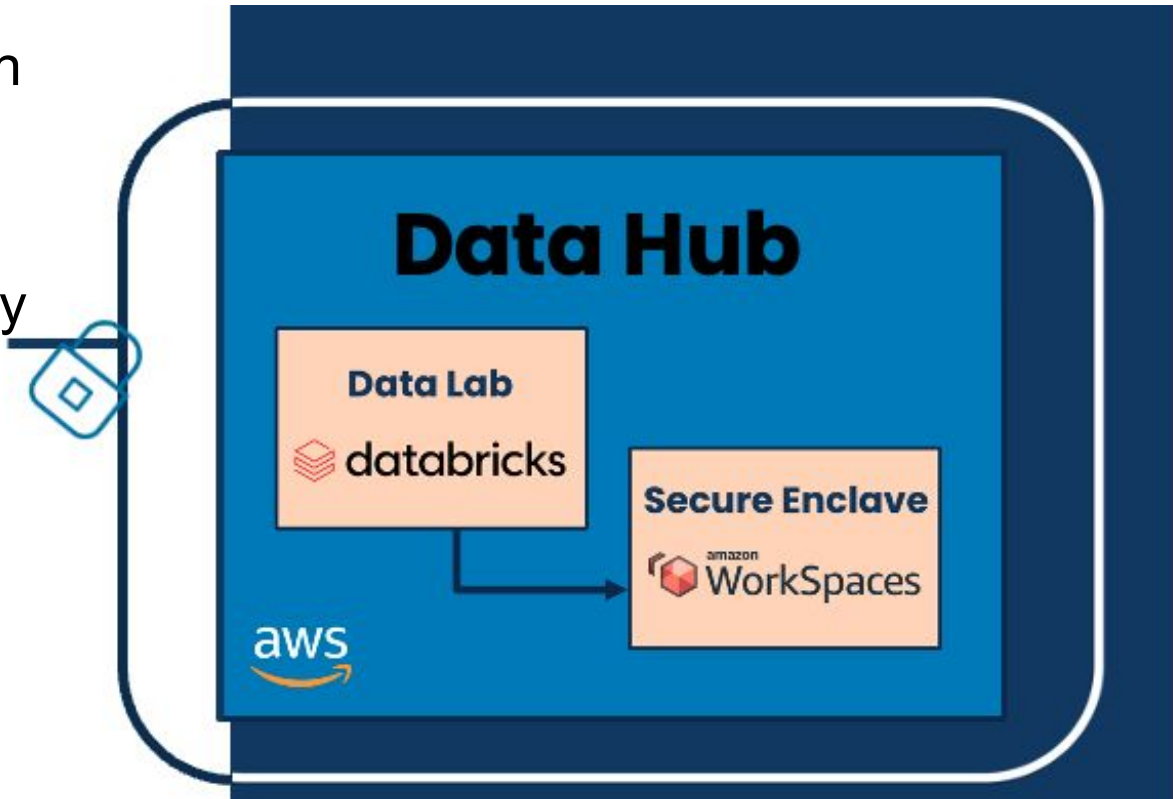


# The Agency Data Hub

Shortened to “Data Hub” in general conversation

Very simply put: It’s a “lockbox” for confidential, record-level, HIPAA-protected data hosted on the AWS cloud to better enable collaboration by creating a safe place for:

- Data sharing
- Project workspaces
- Cross-departmental program analysis
- Data analytics



# The Data Hub Is Purpose-Built for Use Under Strict Conditions

- Data can be pushed into the Data Hub through direct (JDBC) database connection or Amazon S3 bucket
- Data cannot be extracted from the Hub, only results of analysis
- Analyses is sent to dashboards, reports, or other data visualizations



# Integrating Social Services With CDSS





# Early Childhood Integrated Data System (ECIDS)

- An integrated, cross-program data system intended to inform early childhood policies, services, and education to support optimal outcomes for children
- Focused on children aged 0 to 5
- Cross-agency project team, with California Department of Social Services as lead

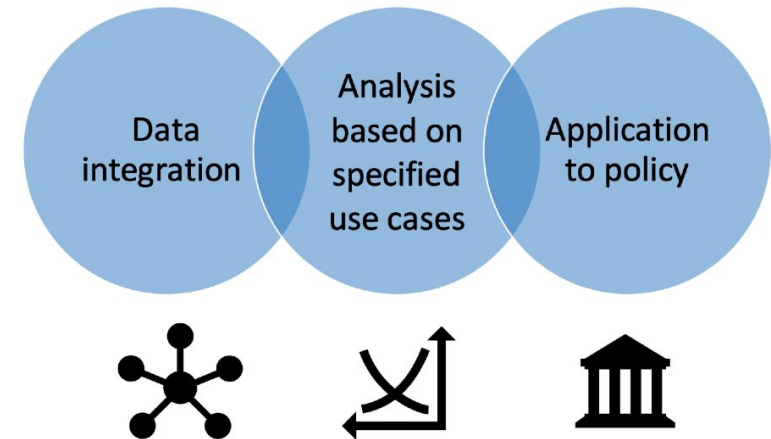


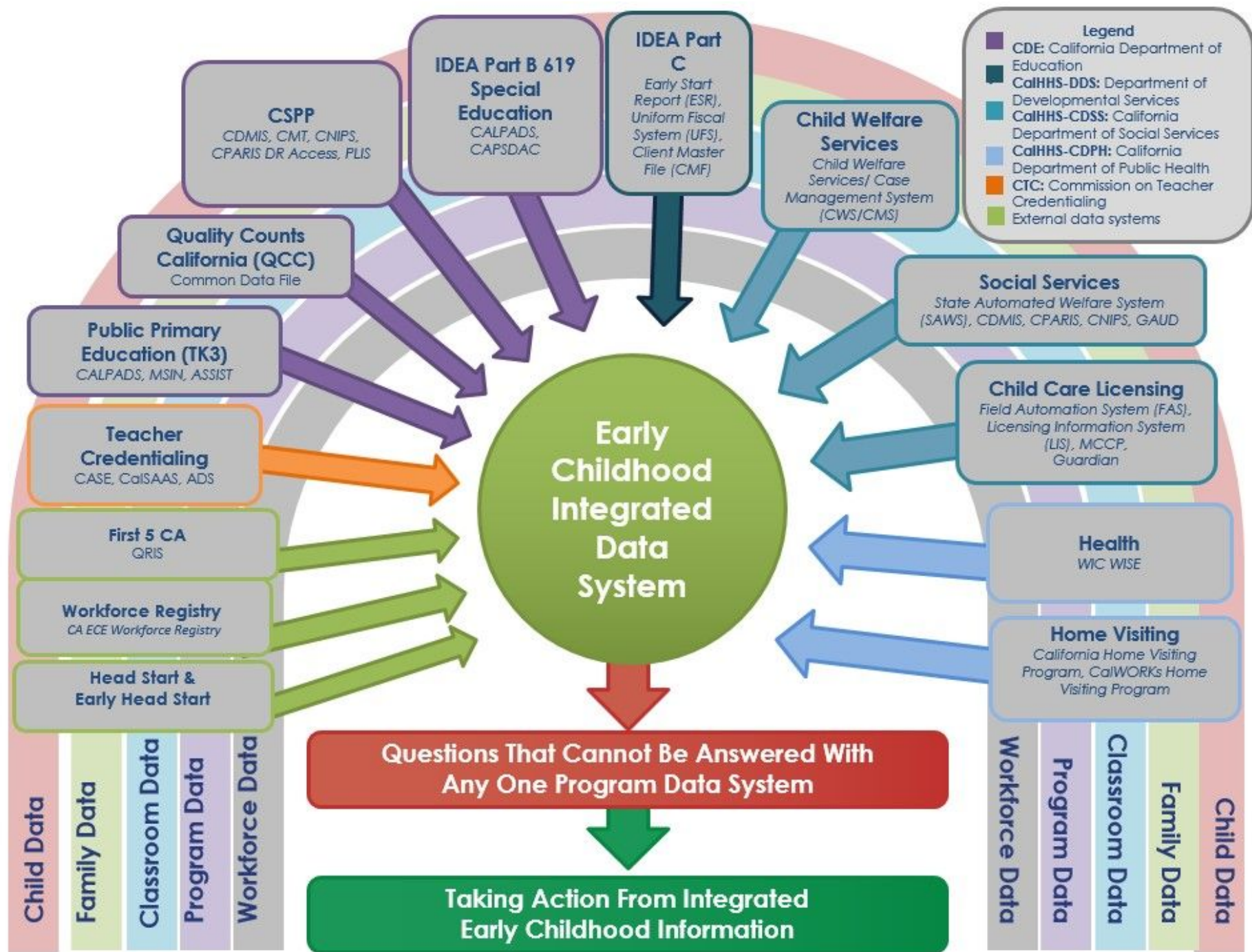


# ECIDS Serves an Important Purpose

- California's mixed-delivery early learning system has significant gaps
- Inability to answer essential questions about the state's early learning and care system
- Families and children participating in multiple programs double counted/reported
- Inaccurate snapshot of families and care

**Access to early learning and care is not enough**





# Integrating Developmental Services With DDS



# Our Consumers and Services



- Home and Community-based Services
- Early Intervention Services





# Benefits of Sharing Data

- Cradle-to-Career does not currently capture data identifying individuals who received Early Intervention services before the age of three.
- Identify individuals with intellectual and developmental disabilities and are Regional Center consumers.
- Gain insight into how individuals with intellectual and developmental disabilities who receive regional center services transition from K-12 to higher education and into the workforce, compared to the general population.
- Gain insight into how individuals with intellectual and developmental disabilities who receive regional center services advance through their school age and young adulthood years with consideration for statewide variations.



# Use Cases

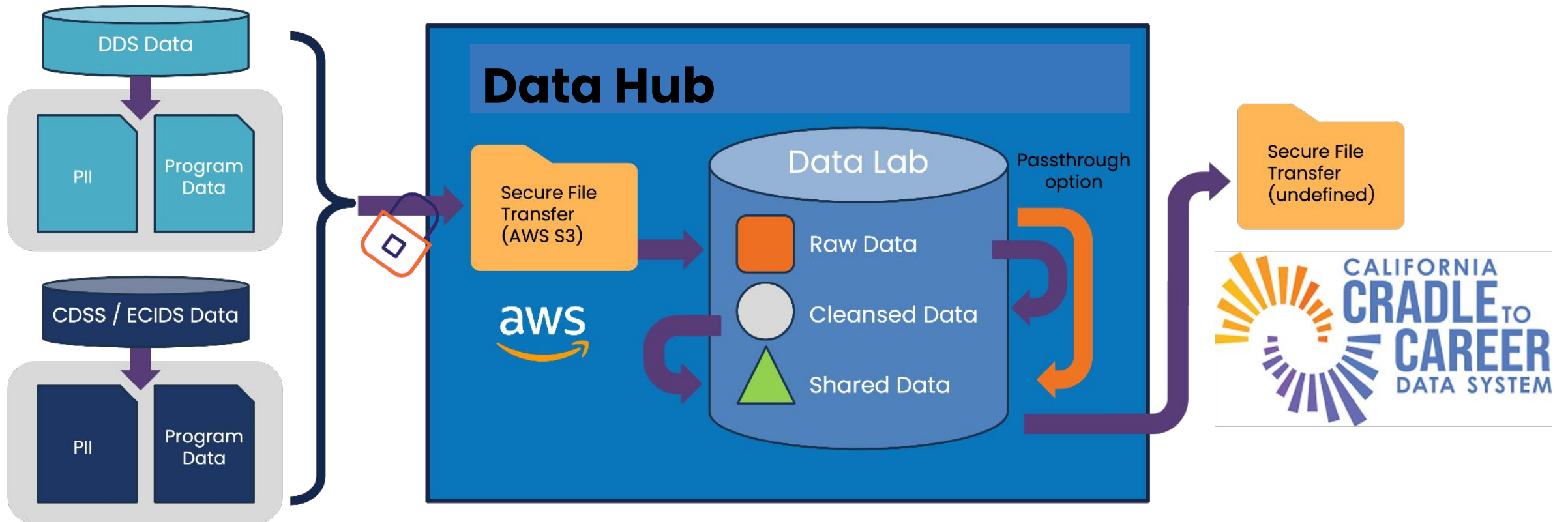
- Compare 3rd-grade assessment scores among children who received Early Start Intervention Services and those who did not receive these services.
- Compare 3rd-grade assessment scores among children who received Early Start Intervention Services and are DDS consumers, and those who did not receive these services and are not DDS consumers.
- Compare 3rd-grade assessment scores between the DDS population and non-DDS population who participated in Transitional Kindergarten.
- Compare the DDS population and non-DDS population who received a high school diploma; who received a certificate of completion. Gain insight into the number of consumers that move on to higher education.





# CalHHS → Cradle-to-Career

Conceptual Diagram



# Questions?



# Thank you!

CalHSS Center for Data Insights and Innovation

[cdii@chhs.ca.gov](mailto:cdii@chhs.ca.gov)

