

Chris Furgiuele
Institutional Research and Academic Planning
University of California Office of the President



Chris Furgiuele is a Director in Institutional Research and Academic Planning (IRAP) at the University of California Office of the President. Chris leads IRAP's work in the collection, analysis, and reporting of student outcomes data in support of university policymaking and information provision to public audiences. He has represented UC on the Cradle to Career Governing Board since 2021 and prior to that served on the Data System's planning process workgroup. Prior to joining UC Chris worked as an evaluator of education and workforce programs at both the federal and state levels. Chris has a bachelor's degree from Syracuse University and a master's degree in public policy from the University of California, Berkeley.

Pamela Brown
Vice President of Institutional Research and Academic Planning
University of California Office of the President



Pamela Brown is Vice President of Institutional Research and Academic Planning (IRAP) at the UC Office of the President (UCOP). Successfully leading her team for close to a decade, IRAP is responsible for producing evidence-based analyses and reports for university leaders to advance strategic and academic planning, address legislative requests, support assessment, and promote transparency efforts.

IRAP areas of expertise include accountability/performance outcome reporting, academic planning and policy, students (i.e., admissions, enrollment planning, financial support, student experience, and outcomes), research, finance, and workforce and compensation, and is responsible for the production of:

- [UC Annual Accountability Report](#),
- [UC Information Center](#), and
- [UC in California maps](#) that illustrate the impact of the University of California through data-driven narratives and visualizations.

The team administers numerous systemwide surveys, including UC Undergraduate Experience Survey (UCUES), UC Graduate Student Experience Survey (UCGSES), and undergraduate and graduate cost of attendance surveys. The [IRAP website](#) includes additional topic briefs and reports on university academic and administrative operations.

Prior to joining UCOP in 2013, Pamela worked sixteen years at UC Berkeley where her last role was Executive Director of the Office of Planning and Analysis (OPA).

Pamela received her Master's degree from the Graduate School of Public Policy and her Bachelor of Arts degree in Applied Mathematics both from the UC Berkeley.

Van Williams

Chief information Officer and Vice President for Information Technology University of California Office of the President



Van Williams is the Vice President of Information Technology Services and Chief Information Officer for the University of California, a \$40+ billion-dollar enterprise that spans ten campuses and six health care systems. As the UC CIO, Van serves as the university's chief IT leader and strategist, collaborating with campus and health CIOs, and other leaders across the UC system. Van also oversees IT related strategic priorities for the UC Office of the President (UCOP). These include enhancing information security, simplifying and consolidating the portfolio of IT services, further developing the data analytics infrastructure, supporting online and hybrid education, and advancing diversity, equity, and inclusion initiatives.

Prior to his arrival at UCOP in September 2021, Van was the Vice Chancellor for Information Technology and Strategic Initiatives at UC Santa Cruz (UCSC), and served as the campus Cyber-Risk Responsible Executive. Van oversaw UCSC's \$800M technology organization, and proudly led a staff of 250 talented people. Under his collaborative leadership, UCSC's technology operation successfully delivered several campuswide transformational initiatives to support UCSC's 19,000+ student population, modernize critical campus systems, and strengthen UCSC's cybersecurity. His UCSC portfolio spanned research and innovation, technology-enhanced education, cyber risk, enterprise resource planning, business process optimization, and strategic corporate partnerships.

Before joining the UC system, Van spent more than 15 years at New York University in various senior roles, including Chief Information Officer for NYU's Stern School of Business. Van obtained an MBA in finance, entrepreneurship and marketing from Stern, and a bachelor's degree from NYU, where he majored in classical civilization (Latin and ancient Greek) and minored in chemistry. Van's professional training and experience are tied to his deep understanding and love of the liberal arts, science, technology, and business. Having worked in both private and public university systems, Van is committed to leveraging higher education as key driver of innovation, social mobility, and the creation of a healthy society.

University of California and Cradle to Career

Partnership, Progress, and Plans

**Pamela Brown, Vice President, UCOP Institutional Research
and Academic Planning (IRAP)**

Van Williams, UC Chief Information Officer

Chris Furgiuele, Director, UCOP IRAP

May 1, 2024

The University at a Glance

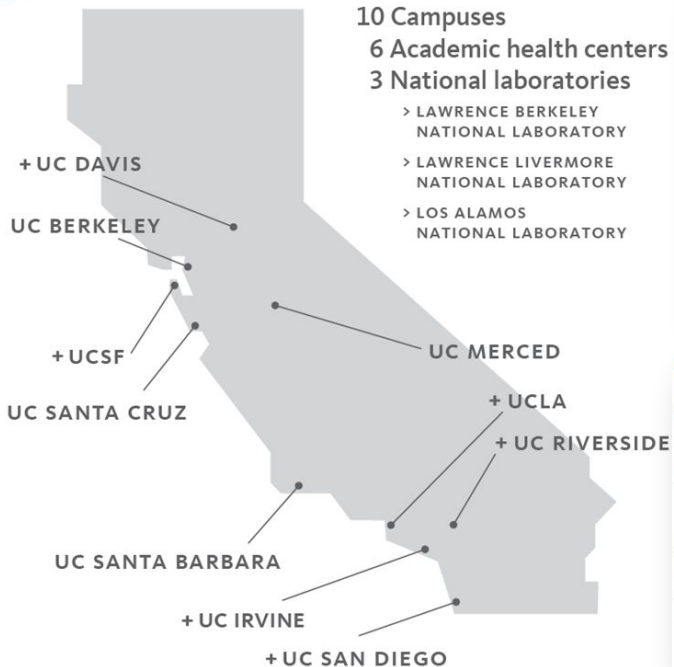
The University of California improves the lives of people in California and around the world through world-class educational opportunities, groundbreaking research, top-rated health care and agricultural expertise. We are driven by values of public service in all we do.

10 Campuses

6 Academic health centers

3 National laboratories

- > LAWRENCE BERKELEY NATIONAL LABORATORY
- > LAWRENCE LIVERMORE NATIONAL LABORATORY
- > LOS ALAMOS NATIONAL LABORATORY



+ ACADEMIC HEALTH CENTERS

EDUCATION

Total enrollment	294,309
Undergraduate students	230,407
Graduate students	63,902
Alumni	2.0 M

More than 170 academic disciplines

More than 850 degree programs

UC HAS SET A GOAL OF PRODUCING 1.2M GRADUATES BY 2030.

RESEARCH IMPACT

Inventions per day (avg.)	5
Inventions disclosed (FY2021)	1,718
Startups from UC intellectual property/technology (thru FY2021)	1,502
Active US and foreign patents (thru FY2021)	13,308

MANY OF CALIFORNIA'S LEADING INDUSTRIES GREW FROM UC RESEARCH, INCLUDING BIOTECHNOLOGY, COMPUTING, SEMICONDUCTORS, TELECOMMUNICATIONS AND AGRICULTURE.

FACULTY AND STAFF

Faculty	24,800
Other academic (postdocs, etc)	49,000
Staff	167,300

UC IS THE STATE'S THIRD-LARGEST EMPLOYER.

ACADEMIC HEALTH CENTERS AND CLINICS

Outpatient visits	9.5 M
Emergency room visits	370,284
Inpatient days	1.16 M
Medicare inpatient days	35.7%
Medi-Cal inpatient days	35.2%

UC ACADEMIC HEALTH CENTERS CONDUCT NEARLY 4,500 CLINICAL TRIALS EACH YEAR, SUPPORTING DEVELOPMENT OF NEW DRUGS AND DISEASE TREATMENTS.

University Highlights

Set a goal of producing 1.2 M graduates by 2030

Third largest employer in the State

Helped California become the nation's top agricultural state, with farm revenues of \$50 billion

Awarded more NIH and NSF funding than any other institution in the country

Academic health centers perform 4,500 clinical trials each year, resulting in new drugs and disease treatments

UC accounts for nearly 10% of all research activity in the United States

UNIVERSITY
OF
CALIFORNIA

294,309
total enrollment

86%
6-year graduation rate

2.0 million
alumni

241,100
employees

9+ million*
outpatient visits

\$47.1 billion
2022-23
operating budget

\$4.8 billion
total financial aid

\$7.2 billion
research awards

\$82.0 billion
economic impact

\$55.8 billion
gross state
product

UC C2C Data at a Glance

Applicants

- 3.4 million applicants
 - 25 data elements
 - 23 years of data
- Campuses applied to
 - Campus admit outcome
 - Campus of enrollment (yield)
 - Demographics
 - First-year or Transfer Student
 - Geographic Location

Enrolled Students

- 1.8 million students
 - 5.8 million records
 - 25 data elements
 - 23 years of data
- Fall to spring retention
 - Second year persistence
 - Demographics
 - Declared major
 - Units attempted per year

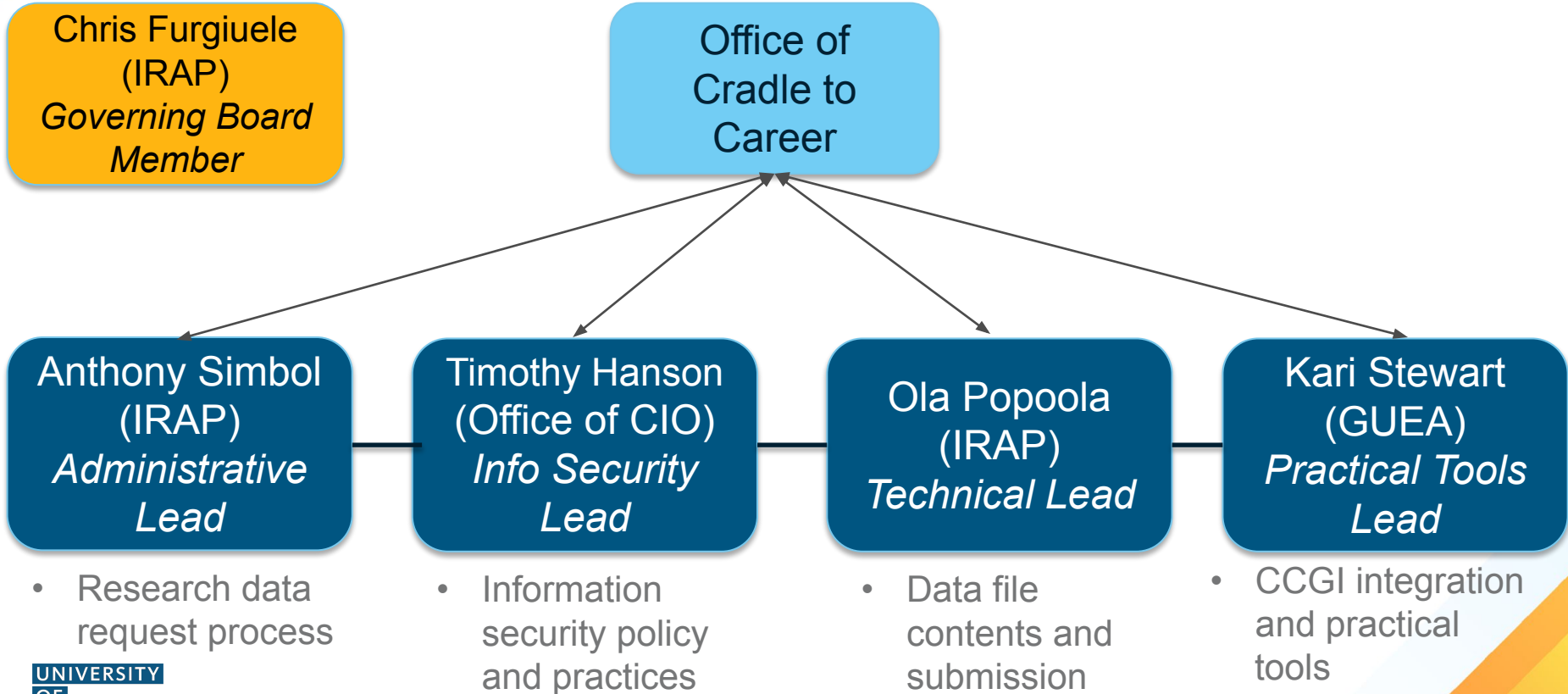
Degree Recipients

- 1.4 million graduates
 - 8 data elements
 - 23 years of data
- Campus of graduation
 - Year of graduation
 - Degree type awarded
 - Degree field of study

Financial Aid

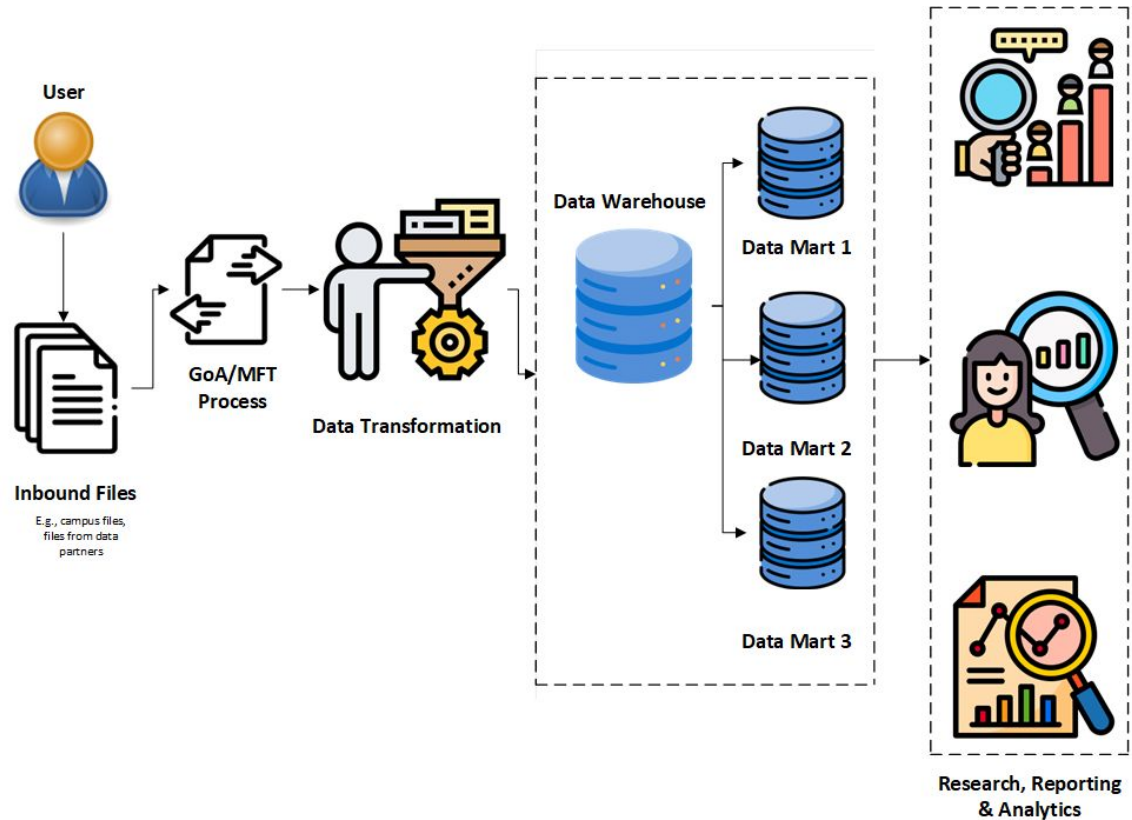
- Student loans
- Pell Grants
- UC Grants
- Chafee Grant
- Work study
- Scholarships

Roles and Responsibilities of C2C Data Provider



UC Student Data Flow

- Continuous submission of student record data from 10 UC campuses
- 500 plus extracts annually from campus, UCOP and external data partners
- Data validation framework and automated error reports
- **Changes underway:** cloud migration and examining AI tools



Prioritize Work that Adds Value to Campuses

Reporting Relief

Federal Integrated Postsecondary Data System (IPEDS)

- ✓ Undergraduate Admissions
- ✓ Student Enrollment
- ✓ Student Financial Aid
- ✓ Degrees Awarded

State of California Legislatively Mandated Reports

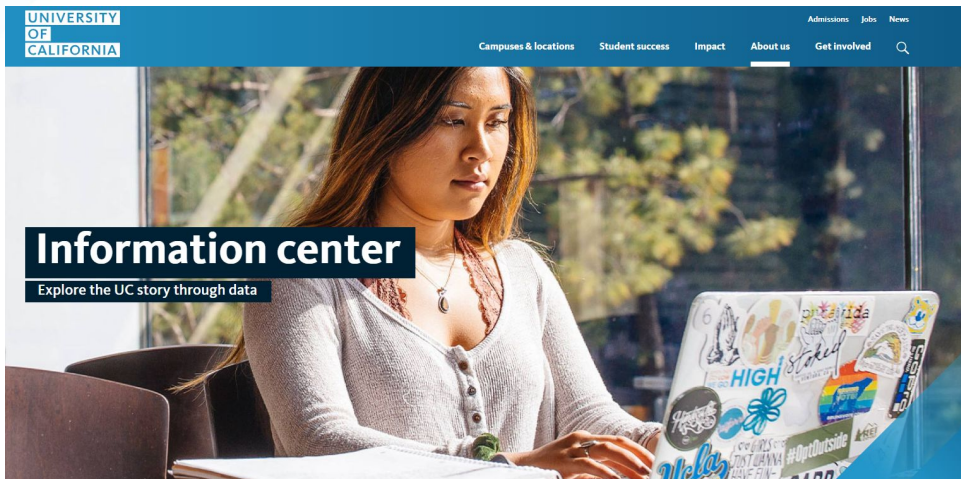
- ✓ UC Compact with the Governor Report
- ✓ Performance Measures Legislative Report
- ✓ CSAC enrollment, persistence, and completion

AAU Data Exchange, American Talent Initiative, U.S. News Rankings, Common Dataset Initiative, etc.

Decision Support to UC Leadership and UCOP Divisions

- Board of Regents
- Presidential Priorities
- Systemwide workgroups
 - Undergraduate Education Financing Model
 - Native American Advisory Committee
 - Undocumented student financial support
- Enrollment and Systemwide Budget Planning
- UC 2030 Student Success Goal Progress Tracking
- UCOP Divisions Policymaking (Academic Affairs and Business Operations)

Prioritize Public Access to Information

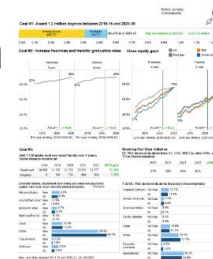


Information center

Explore the UC story through data

UC Information Center

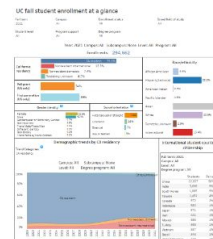
	2016-17	2022-23	#	% Chg
Users	62,017	344,173	282,156	455%
Sessions	91,323	534,079	442,756	485%
Page Views	162,083	573,500	411,417	254%



March 14, 2024

UC 2030 dashboard

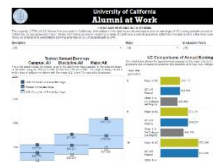
This dashboard shows the UC 2030 goals in UC's multiyear framework.



January 19, 2024

Fall enrollment at a glance

Fall undergraduate and graduate enrollment by discipline, gender, ethnicity, residency, country (for undergraduates) and campus.



April 5, 2024

UC alumni at work

The dashboard shows employment outcomes by major and discipline of UC undergraduate alumni at two, five and ten years after graduation.



February 9, 2024

California high school graduation projections and A-G completion

What does a changing California mean for higher education?

C2C Use Cases for UC

1. Student Pipeline Research
 - K-12
 - CCC units and transfer readiness
2. Community College Transfer Affordability
 - CCC Transfer cumulative loan debt
3. Student Basic Needs
 - CalFresh eligibility and participation
4. Supporting secure access to student data for researchers
5. Understanding statewide needs for targeting student outreach programming

C2C Practical Tools and UC

Target Date	Milestone
July 2022	Students' UC application status exchanged daily from UC to CCGI to inform school personnel who can support students with application submission
February 2023	UC implements flags for common data errors in A-G course submission process to ensure that students' A-G progress is reported accurately and can be matched for import into the UC application
August 2024	Students may import verified course data into the UC application from CCGI, simplifying the application process
In Progress	CCGI high school transcript delivery to UC campuses eTranscript delivery of community college transcripts to UC campuses

Digital Risk Governance

Information
Security
Policies

Vendor Risk
Management

AI Risk
Management

Data Sharing
Agreements

ISO/NIST

Data Security
Appendix

3rd Party

Future Applications and AI

- Resource Allocation models
- Large Scale Personalize Mentoring
- Intervention programs for at risk Learners
- Program Evaluation
- Bias Identification
- Adaptive Learning
- Adaptive Parenting Guides

Thank you

Appendix

UC Information Center Resources

UC Information Center

www.universityofcalifornia.edu/infocenter/

* Campus filter / ** campus and discipline filter / *** campus and program filter

Undergraduate Admissions and Outreach

[Freshman fall admissions summary](#) *

[Transfer fall admissions summary](#) *

[Undergraduate admissions summary](#) by source school type and race/ethnicity *

[Admissions by school source](#), including GPA, by source school and race/ethnicity *

[Transfers by major](#), including average GPAs *

[A map of CA Community College new enrollments](#) *

[Enrollment destinations of UC admits](#) *

[Gap Analysis](#) *

[UC's K-12 outreach programs](#)

[K-12 schools directory](#)

[Public high school pathway to freshman enrollment](#)

[Entry level writing requirement results](#)

[Community college outreach programs](#)

[Student Academic Preparation and Educational Partnership \(SAPEP\) outcomes](#)

Graduate Students

[Academic graduate admissions](#) graphs and tables **

[UC doctoral program statistics](#) ***

[Doctoral persistence and completion](#) by discipline and campus **

[Time to doctorate](#) by discipline and campus **

Special Populations

[First-generation college students](#) *

[Student basic needs](#) *

[UC undergraduate current and former foster youth](#) *

[UC military-affiliated students](#) *

Enrollment, Degrees, and Longitudinal Outcomes

[Fall enrollment at a glance](#) by level & residency, field of study, race/ethnicity, parent education (undergrads) and Pell status (undergrads) **

[Summer enrollment](#), including cross-campus enrollment, survey feedback, and outcomes by summer enrollment *

[UC historical fall enrollment, 1869 to present](#) *

[Degrees awarded data tables](#) by degree level, discipline, source school type, and student characteristics **

[Enrollment, degrees, UG admissions and graduation data](#) by disaggregated race/ethnicity category *

[STEM degree pipeline](#): diversity, degree and earnings *

[UC undergraduate student research, internships and service learning](#) *

[University of California student voter participation in federal elections](#) *

[UC Education Abroad Program \(EAP\)](#) *

[UC and comparator Pell recipient graduation rates](#) *

Financial Aid and Affordability

[Net cost of attendance](#) *

[Student financial support data tables](#) *

UC 2030 Goals

[UC 2030 dashboard](#) *

[Undergraduate persistence and graduation rates](#), including data by entry high school and CCC *

[UC student success dashboards](#) *

[Profile of undergraduate stopouts](#) *

[UC alumni graduate degree outcomes](#) *

UC Information Center cont.

www.universityofcalifornia.edu/infocenter/

* Campus filter / ** campus and discipline filter / *** campus and program filter

Alumni Outcomes

[UC undergraduate alumni outcomes in California](#): industries and earnings ***

[UC alumni at work](#): outcomes by major and campus ***

[CLIMB mobility analysis](#): economic mobility, grad degree attainment, charitable giving

[UC longitudinal alumni dashboards](#) *

[UC-trained health professionals practicing in California](#) ***

[UC-educated California public school teachers](#) *

Surveys and the Student Experience

[UC undergraduate experience \(UCUES\)](#) 2006, 2012, 2014, 2016, 2018, 2020 and 2022 responses ***

[UCUES common items longitudinal analysis](#) *

[UCUES COVID-19 and remote learning dashboard](#) *

[UC student health and well being](#) *

[University of California stopout survey](#) *

[UC and California student stopout surveys](#)

[UC Graduate Student Experience Survey \(UCGSES\) data](#)

[UC Graduate Student Experience Survey \(UCGSES\) dashboard](#) **

[UC Graduate Student Experience Survey \(UCGSES\) data tables, 2023](#) **

[UC Graduate Student Experience Survey \(UCGSES\) data tables, 2021](#) **

[UC doctoral experience survey](#) **

[Employment and doctoral experience of PhD recipients](#) **

[Doctoral alumni survey](#): where alumni work and reflections on their UC education

[Student survey completion and response rates](#) *

[Faculty instructor survey 2022](#) *

[Faculty and instructor remote instruction survey](#) *

Faculty and Staff

[UC employees, Full-Time Equivalent \(FTE\)](#) *

[UC employee headcount](#) *

[UC workforce diversity, academic and staff](#) *

[Staff workforce profile](#) *

[Annual wage reporting](#) *

[Comparative salaries of university leaders](#) *

Research, Contracts and Grants

[Revenue and expense data](#) by source, use and function *

[Research expenditures comparisons](#) *

[Awards and proposals](#) by project type and sponsor *

[Award explorer](#) **

[NIH funding for COVID response](#) *

[UC inventions at a glance](#) *

[Sponsors of contracts and grants](#)

[UC's Natural Reserve System use data](#) *

Institutional Measures

[Revenue and expense data](#) by source, use and function *

[Student-faculty ratio](#) *

[Community Safety: calls for service](#) *

[Community Safety: use of force](#) *

[Community Safety: civilian complaints](#) *

[Community Safety: stops](#) *

[Community Safety: crimes](#) *

[Community Safety: UCPD budget and workforce](#) *

The External Higher Education Environment

[UC in California map](#) *

[California high school graduation projections and A-G completion](#)